

# PRODUCT SHEET

## Drivdon 36W/24V, DALI / Push dim



**SELV Class 2**

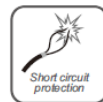
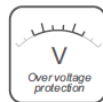
**RoHS**



Flicker-free  
IEEE 1789  
Achieve high frequency exemption level.

(The certification icons represent on-going certification applications only, and final certification qualification is subject to actual products.)

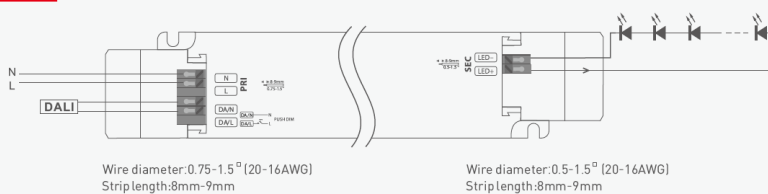
Dimmable:  
0.1%-100%



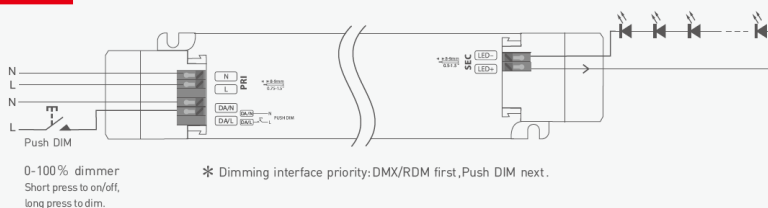
ARTIKEL NR: Drivdon 36W/24V DALI/Push dim

### Wiring Diagram

#### DALI Connection Mode

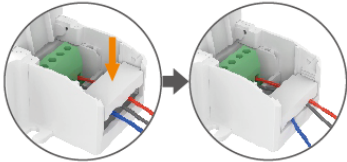


#### Push DIM Connection Mode

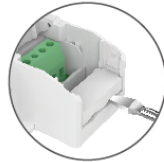


## Protective Housing Application Diagram

### Tension plate



Push the tension plate down to fix the electric wires.



Push the side plate outwards and remove the tension plate by prying it up with a tool at the same time.

### Remove the protective housing



Pull the bottom left and right from the bottom to remove it.